

# Kevätkisa 2023



**Oil Pattern Distance:** 42 Feet      **Reverse Brush Drop:** 42 Feet      **Oil Per Board:** 50 uL  
**Forward Oil Total:** 10.85 mL      **Reverse Oil Total:** 15 mL      **Volume Oil Total:** 25.85 mL  
**Forward Boards Crossed:** 217 Boards      **Reverse Boards Crossed:** 300 Boards      **Total Boards Crossed:** 517 Boards

	Start	Stop	Loads	Speed	Crossed	Start	End	Feet	T.Oil
1	2L	2R	2	14	74	0.0	1.9	1.9	3700
2	11L	11R	4	18	76	1.9	12.1	10.2	3800
3	13L	13R	3	18	45	12.1	19.7	7.6	2250
4	15L	15R	2	22	22	19.7	25.9	6.2	1100
5	2L	2R	0	22	0	25.9	42.0	16.1	0

Forward Reverse More

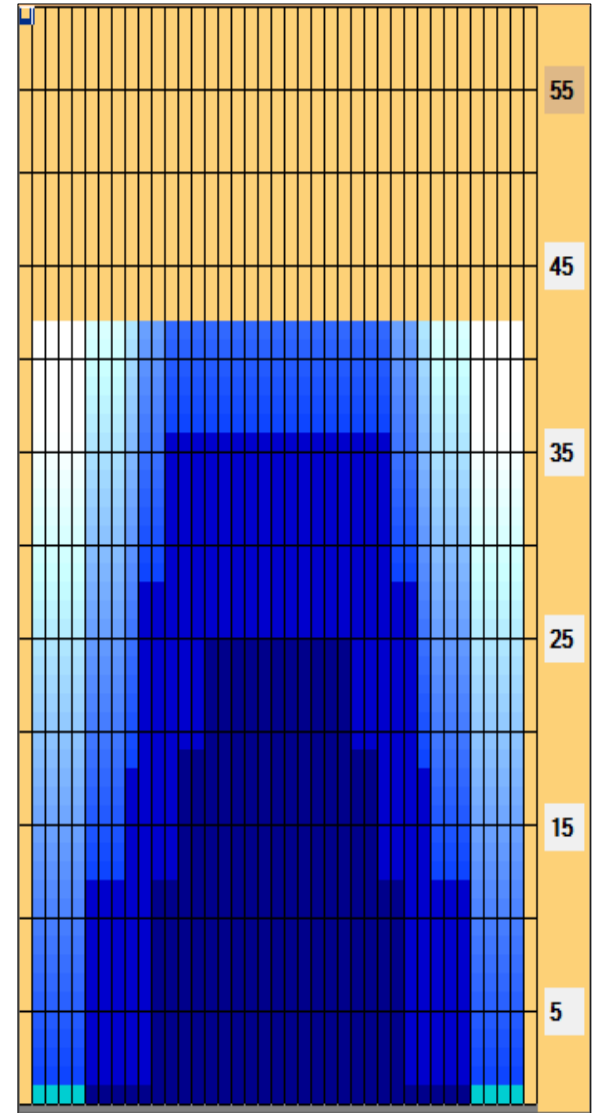
	Start	Stop	Loads	Speed	Crossed	Start	End	Feet	T.Oil
1	2L	2R	0	30	0	42.0	36.0	-6.0	0
2	12L	12R	4	14	68	36.0	28.1	-7.9	3400
3	10L	10R	5	14	105	28.1	18.2	-9.9	5250
4	9L	9R	3	14	69	18.2	12.3	-5.9	3450
5	6L	6R	2	14	58	12.3	8.4	-3.9	2900
6	2L	2R	0	14	0	8.4	0.0	-8.4	0

Forward Reverse More

Conditioner:  
Prodigy

TransferType:  
Transfer Brush

- Forward
- Reverse
- Combined
- Buff



Item	3L-7L:18L-18R	8L-12L:18L-18R	13L-17L:18L-18R	18L-18R:17R-13R	18L-18R:12R-8R	18L-18R:7R-3R
Description	Outside Track:Middle	Middle Track:Middle	Inside Track:Middle	Middle: Inside Track	Middle:Middle Track	Middle:Outside Track
Track Zone Ratio	8.93	2.12	1.03	1.03	2.12	8.93

